


Human CCL3 Protein, His tag (Animal-Free)

Cat #: PRP1925

Size: 5 µg/20 µg/100 µg/1 mg

Product Information

	Product Name: Human CCL3 Protein, His tag (Animal-Free)		
REF	Catalog Number: PRP1925	LOT	Lot Number: Refer to product label
	Purity: > 95 % as determined by SDS-PAGE		
	Storage: Store at -20°C		Preparation method: E.coli
	Shipping: The product is shipped at ambient temperature.		

Background: C-C Motif Chemokine Ligand 3 (CCL3) is also called macrophage inflammatory protein 1-alpha (MIP-1-alpha) and is expressed in bone marrow and liver. Upon binding to the receptor, CCR1, CCR4, or CCR5, CCL3 plays an essential role in acute inflammatory responses like recruitment and activation of polymorphonuclear leukocytes and induction of monophasic fever. In addition, CCL3 participates in resistance to type 1 virus infection, mediation of MAPK signaling pathway, cell-cell signaling, and calcium-mediated signaling.

Sequence: Amino acid sequence derived from Human CCL3 (Ala27-Ala92) (P10147) was expressed.

Protein length: The recombinant Human CCL3 consists of 66 amino acids and predicts a molecular mass of 8.4 kDa.

Biological Activity: Measured by its ability to chemoattract human PBMC using a concentration range of 5 -50 ng/mL.

Endotoxin: <0.1 EU per 1 µg of the protein by the LAL method.

Formulation: Lyophilized from 50 mM Tris , 150 mM NaCl, pH 8.5.

Storage Instructions: Lyophilized protein product should be stored desiccated below -18°C. Upon reconstitution, the protein should be stored at 4°C between 2-7 days and for future use below -18°C. For long term storage it is recommended to add a carrier protein (5% HSA , 10%FBS or 0.1%BSA). Please prevent freeze-thaw cycles.

Usage notes: Always centrifuge tubes before opening. It is recommended to reconstitute the lyophilized recombinant protein to a concentration of 0.1-1 mg/mL using the buffer we provided, and keep at room temperature for at least 20 min to fully dissolve. Please avoid vortex vigorously.

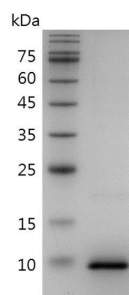


Fig. SDS-PAGE analysis of Human CCL3 protein.

Note: The product listed herein is for research use only and is not intended for use in human or clinical diagnosis. Suggested applications of our products are not recommendations to use our products in violation of any patent or as a license. We cannot be responsible for patent infringements or other violations that may occur with the use of this product.